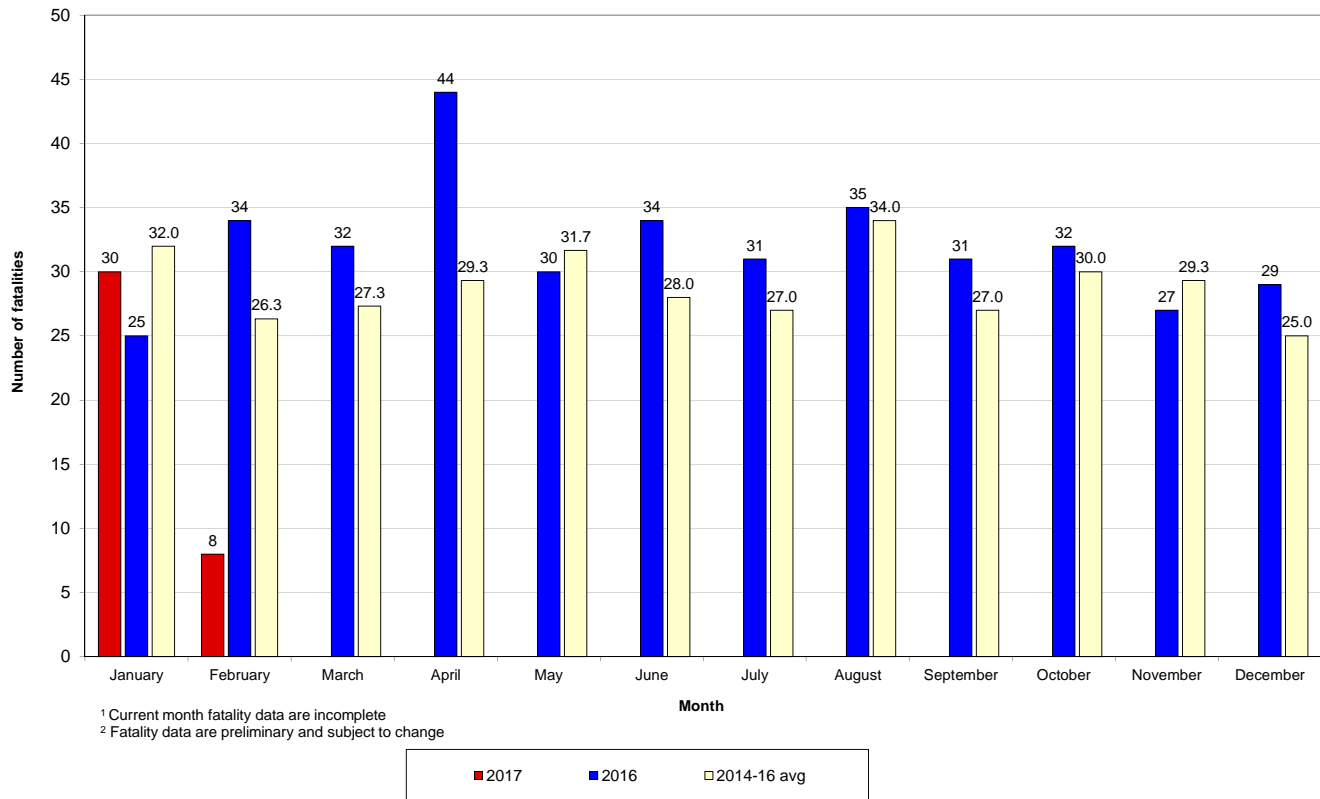


	2017	2016	+/-	% change
Calendar year to date	38	39	-1	-3%
February to date	8	14	-6	-43%
12-month period to date	383	342	41	12%

Fatalities 12-month moving total - 2012 to date



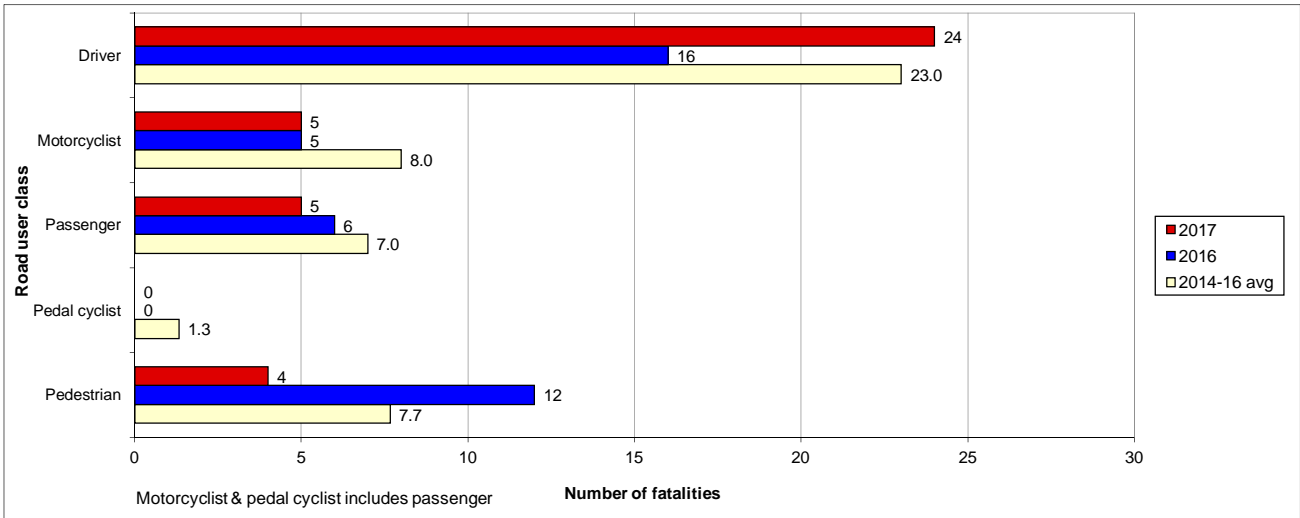
Road fatality comparative statistics by month¹ for 2016², 2017² and the average for the 3-year period 2014-2016²



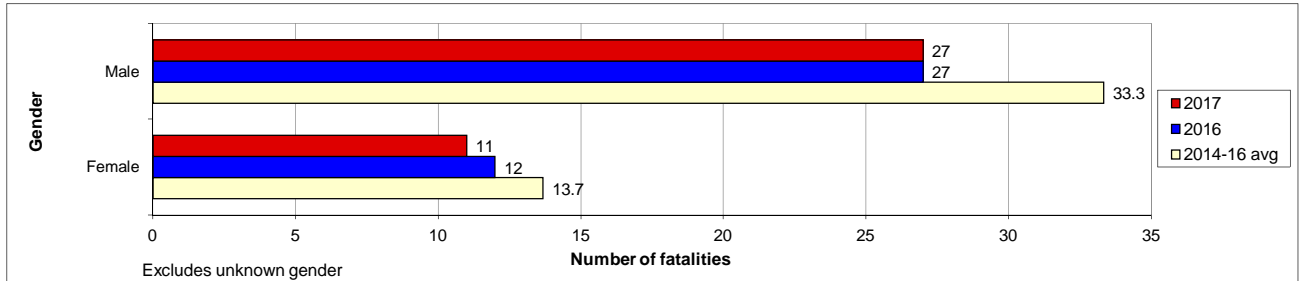
Preliminary Data - Note: Fatalities will be removed from statistics if subsequent Police or Coronial investigation shows that they did not fall within National reporting guidelines. Fatalities will be added from a crash occurring prior to today's date where a person subsequently dies within 30 days or the crash is reported late. Fatalities are deaths which occurred within 30 days of a crash as a result of injuries received in the crash. The crash must have occurred within the surveyed road reserve.

Road fatality comparative statistics for the period 01 January to 16 February 2016², 2017² and the average for the same period in 2014, 2015 and 2016²

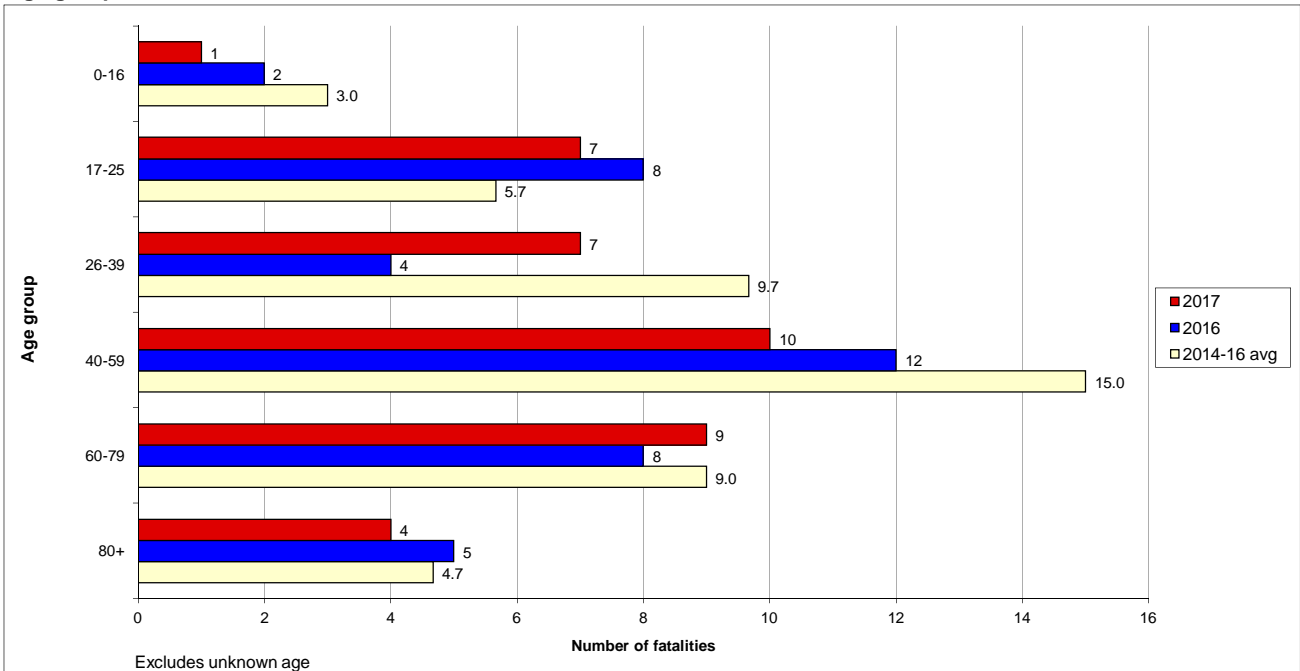
Road user class



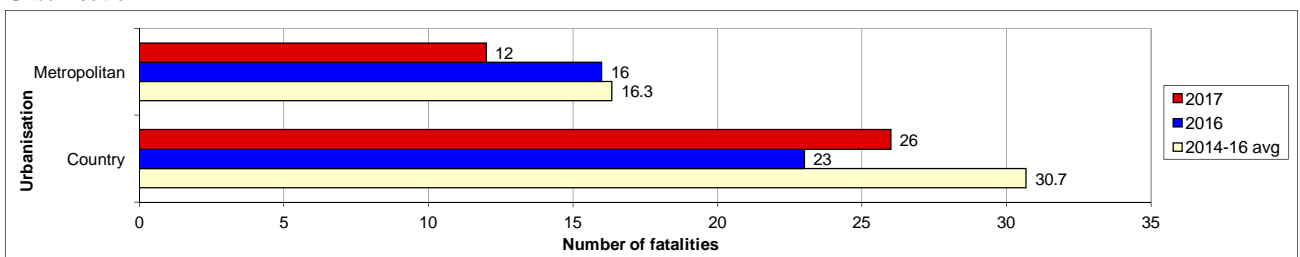
Gender



Age group



Urbanisation



² Fatality data are preliminary and subject to change

Road fatality comparative statistics for the period 01 January to 16 February 2016², 2017² and the average for the same period in 2014, 2015 and 2016²

Road user class

	2017	2016	+/-	% change	3-year average
Driver	24	16	8	50%	23.0
Motorcyclist	5	5	0	0%	8.0
Passenger	5	6	-1	-17%	7.0
Pedal cyclist	0	0	0	N/A	1.3
Pedestrian	4	12	-8	-67%	7.7

Motorcyclist & pedal cyclist includes passenger

Gender

	2017	2016	+/-	% change	3-year average
Male	27	27	0	0%	33.3
Female	11	12	-1	-8%	13.7

Excludes unknown gender

Age group

	2017	2016	+/-	% change	3-year average
0-16	1	2	-1	-50%	3.0
17-25	7	8	-1	-13%	5.7
26-39	7	4	3	75%	9.7
40-59	10	12	-2	-17%	15.0
60-79	9	8	1	13%	9.0
80+	4	5	-1	-20%	4.7

Excludes unknown age

Urbanisation

	2017	2016	+/-	% change	3-year average
Metropolitan	12	16	-4	-25%	16.3
Country	26	23	3	13%	30.7

² Fatality data are preliminary and subject to change

Road Toll Update for NSW

up to and including
Thursday, 16 February 2017

Fatalities advised since last update issued: 2
Fatalities excluded since last update issued: 0

	CALENDAR YEAR TO MIDNIGHT 16 February					12-MONTH PERIOD ENDING 16 February				
	2017 (Prelim)	2016 (Prelim)	DIFF.	3-YEAR AVERAGE	DIFF.	2017 (Prelim)	2016 (Prelim)	DIFF.	3-YEAR AVERAGE	DIFF.
Fatal crashes	34	38	-4	45	-11	356	321	35	310	46
Fatalities										
Driver	24	16	8	23	1	194	150	44	154	40
Passenger	5	6	-1	7	-2	52	57	-5	52	0
Motorcyclist*	5	5	0	8	-3	66	60	6	64	2
Pedestrian	4	12	-8	8	-4	66	69	-3	51	15
Pedal cyclist*	0	0	0	1	-1	5	6	-1	10	-5
Other	0	0	0	0	0	0	0	0	0	0
TOTAL KILLED	38	39	-1	47	-9	383	342	41	331	52

* Includes passengers

PRELIMINARY 2016 TOTALS:	Fatal crashes 360	Fatalities 384
---------------------------------	--------------------------	-----------------------

Preliminary Data -Note: Fatalities will be removed from statistics if subsequent Police or Coronial investigation shows that they did not fall within National reporting guidelines. Fatalities will be added from a crash occurring prior to today's date where a person subsequently dies within 30 days or the crash is reported late. Typically, these variations may result in a statewide annual decrease of up to 12 fatalities from the initial preliminary figure.

[Click here](#) for more information about traffic crash statistics

[Click here](#) for more information about the Centre for Road Safety